

# Securing client cloud environments using VMware NSX capabilities

Łukasz Walicki



**DataCenter PPNT**

# Very short agenda

- DataCenter PPNT - who we are, what we do?
- From hardware to network virtualization
- Virtual (cloud) environments - is it really secure?





# Safety, Professionalism, Modernity

- Safe/Secure DataCenter

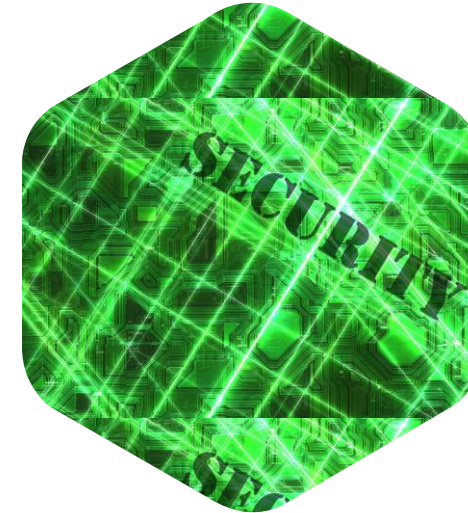
High availability policy, ISO 20000 i 27001

- Qualified and Professional Team

Experienced, certified specialists

- Modern Business

Gold Partner Microsoft, partner VMWare, Veeam





# Our Services

- **Virtual Datacenter, Virtual servers**

Modern cloud solution based on vCloud VMWare

- **Collocation**

Quality and safety for your physical servers

- **Client systems administration**

Professional Services and Support







# Physical or Virtual servers



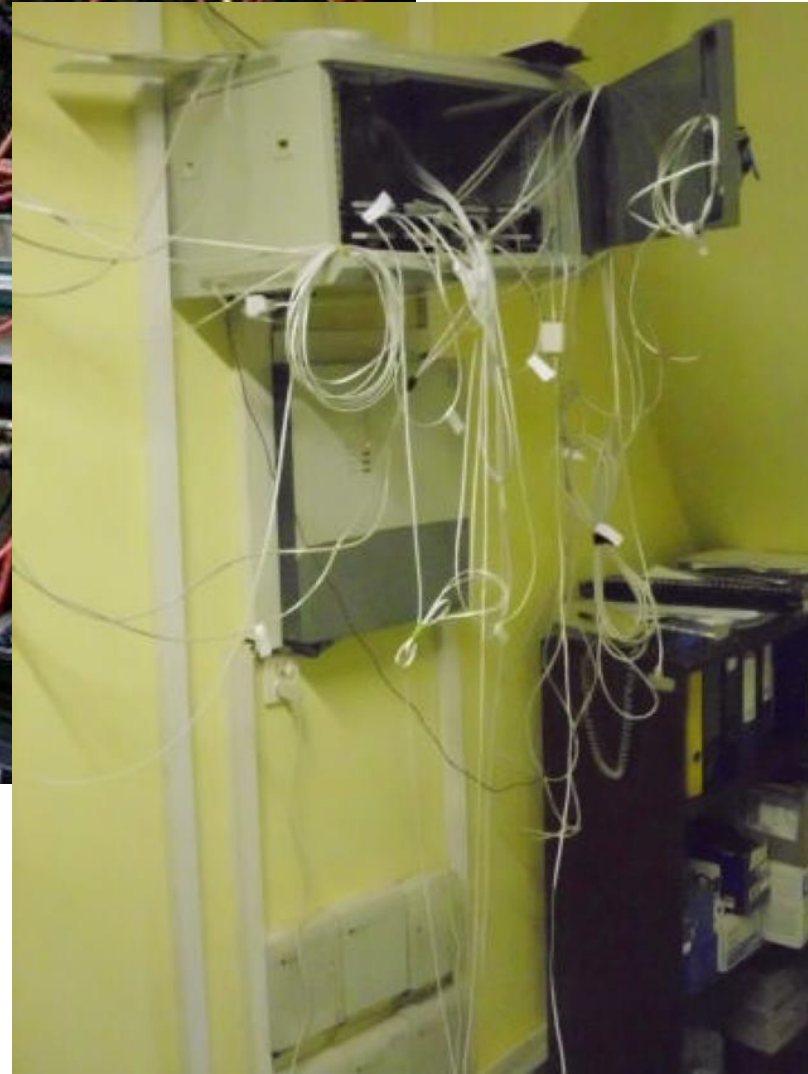
Is it secure way?







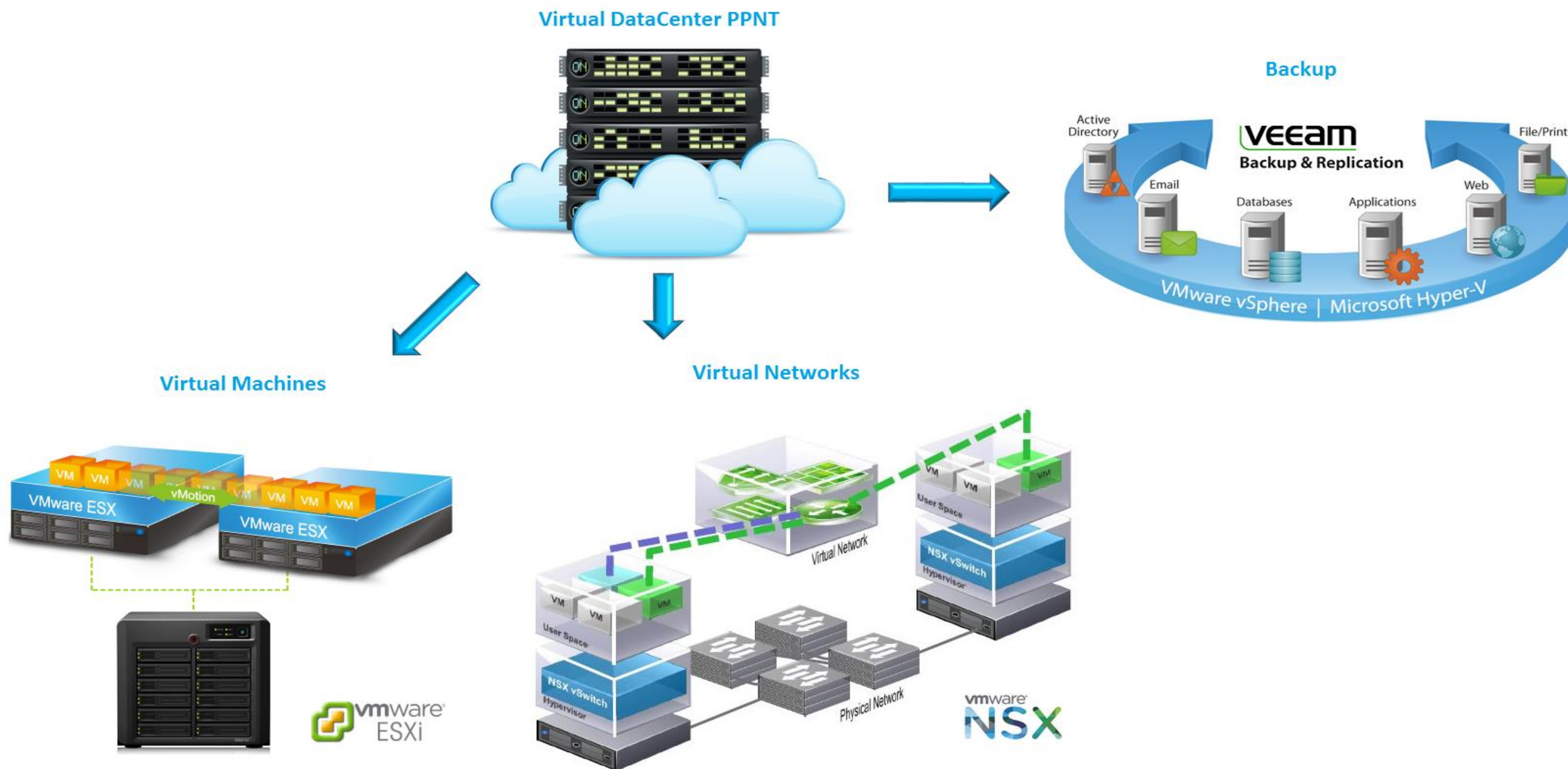
# Network virtualization - why?







# Network virtualization - next step for cloud services





# VMware NSX as SDN

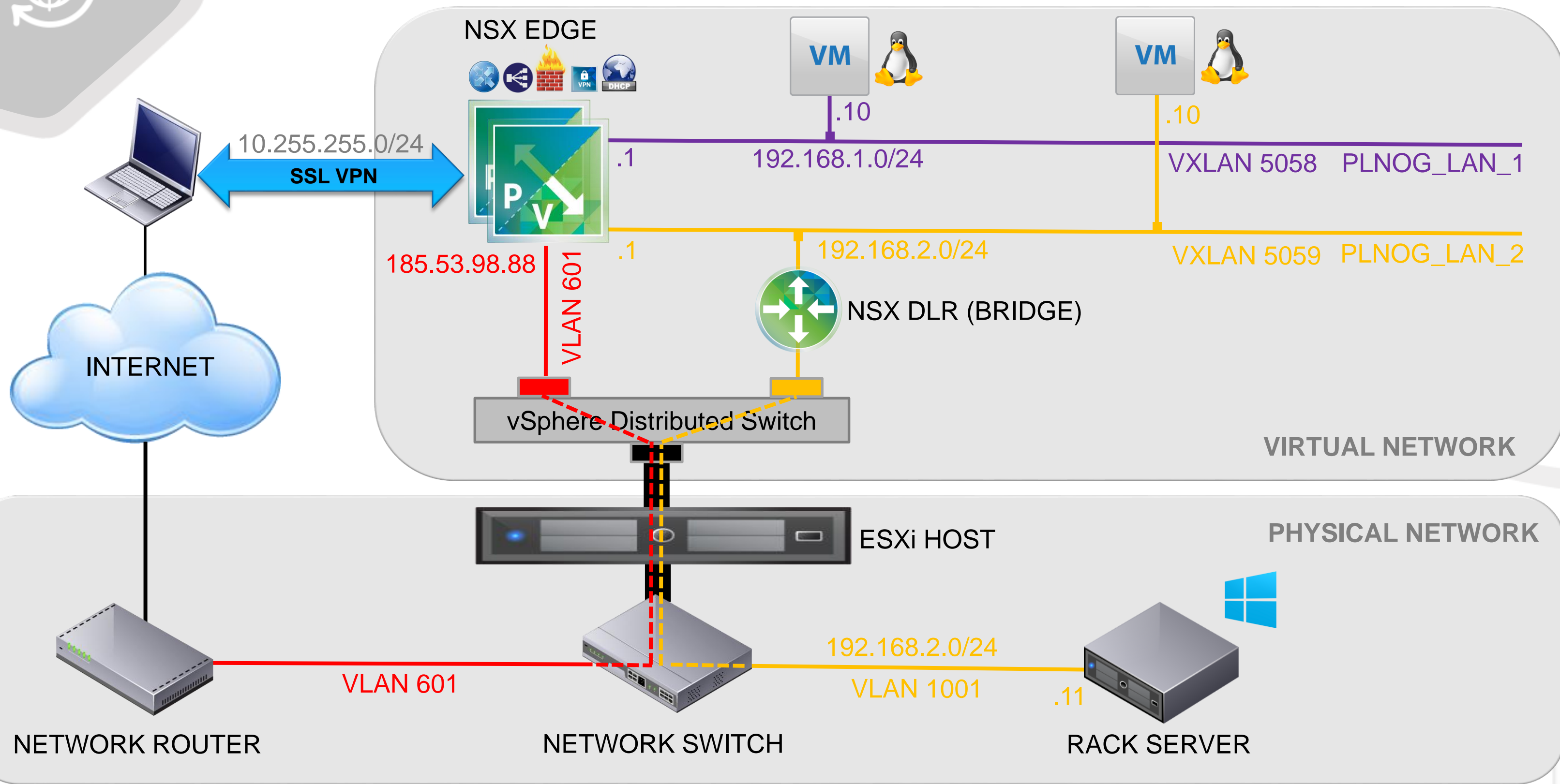
- Functionality
- Quick deployment and perfect integration with vSphere
- vCloud Director integration
- Virtual routers, virtual firewalls
- High level of security
- Few „clicks” to secure your cloud





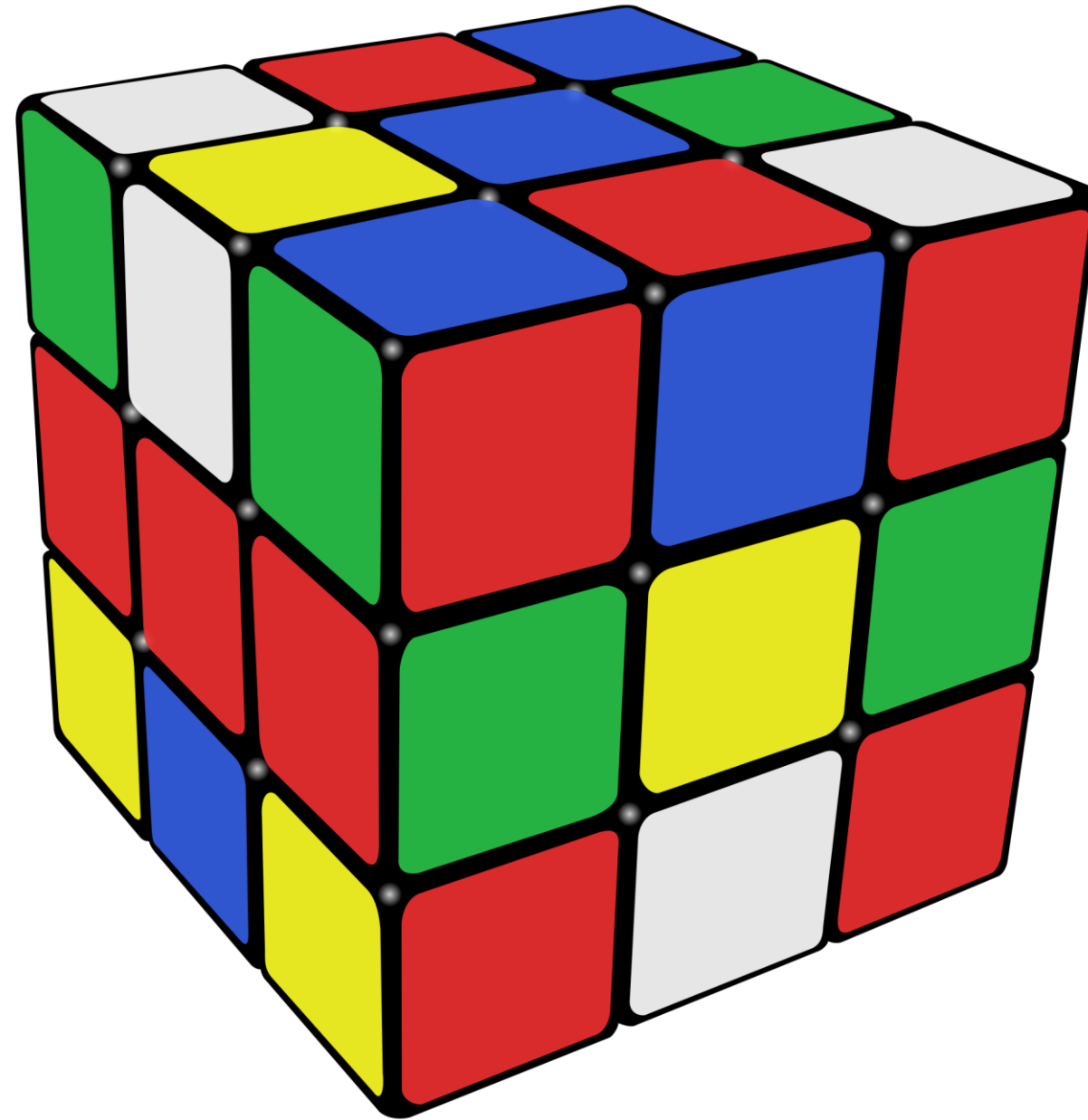


# Connecting Virtual and Physical – why not?!





# How customer can secure his cloud using NSX





# Simple Cloud environment

- 10 virtual servers
- 5 virtual networks
- vApp Functionality
- Web management interface
- Virtual router(s) – Edge gateways







System [redacted] x










[Home](#) [My Cloud](#) [Catalogs](#) [Administration](#)

[Set up this organization](#)

### Quick Access

To start a vApp, click Start. To use a powered on vApp, click on its thumbnail.

[+ Add vApp from Catalog](#) [+ Add vApp from OVF](#) [+ Build New vApp](#) [+ Import from vSphere](#)

<div></div> <div>Running Lease never expires</div> <div><a href="#">Open</a></div>	<div>DEV</div> <div></div> <div>Running Lease never expires</div> <div><a href="#">Open</a></div>	<div></div> <div>Running Lease never expires</div> <div><a href="#">Open</a></div>	<div>Production</div> <div></div> <div>Running Lease never expires</div> <div><a href="#">Open</a></div>	<div>Demo</div> <div></div> <div>Stopped Lease never expires</div> <div><a href="#">Open</a></div>
<div></div> <div>Running Lease never expires</div> <div><a href="#">Open</a></div>	<div></div> <div>Running Lease never expires</div> <div><a href="#">Open</a></div>	<div></div> <div>Running Lease never expires</div> <div><a href="#">Open</a></div>	<div></div> <div>Running Lease never expires</div> <div><a href="#">Open</a></div>	



# Answer - NSX Edge

- DHCP
- NAT/SNAT Rules
- Firewall
- VPN (Site-to-Site IPSec)
- Load Ballancer





# Thank you!

Łukasz Walicki

[lukasz.walicki@datacenterppnt.pl](mailto:lukasz.walicki@datacenterppnt.pl)

[www.datacenterppnt.pl](http://www.datacenterppnt.pl)